

CONTINENTAL NH3 PRODUCTS

INSTALLATION, OPERATION, REPAIR AND MAINTINANCE INSTRUCTIONS

PRODUCT SERIES: A-1250, A-1275, A-1350, A-1375, A-1650

ATTENTION: Please follow all of the instruction in this manual carefully and read the entire manual completely, failure to do so may cause the product to function improperly or fail causing serious injury or death.

DANGER  **DANGER**

ANHYDROUS AMMONIA IS AN INHALATION HAZARD AND WILL CAUSE SERIOUS INJURY OR DEATH. PLEASE USE EXTREME CAUTION WHEN HANDLING IT OR PERFORMING ANY MAINTENANCE ON EQUIPMENT USED FOR ANHYDROUS AMMONIA.

ATTENTION: Before performing any installation, repair or maintenance please follow the instructions below.

1. You must be certified to work with anhydrous ammonia. If you are not please seek out the appropriate agricultural department to attend a class to obtain the proper certification.
2. Wear appropriate safety goggles, gloves and breathing apparatuses.
3. Drain all tanks, hoses and piping of anhydrous ammonia COMPLETELY before removing, installing, performing maintenance or repairing any equipment.
4. Always remove device from service before performing any maintenance or repair
5. have sufficient water near by
6. Obey all local, state and federal laws regarding the handling of anhydrous ammonia

INSTALLATION & OPERATION

1. Apply pipe thread sealant to any pipe male pipe thread to be installed into valve.
2. Make sure the valve is turned off before installation.
3. Make sure valve is facing the appropriate direction in relation to flow
4. Before operating valve make sure valve is attached to appropriate piping, hose or fitting.
5. Before operating the valve make sure there is appropriate hoses and valves are attached to the outlet side of the valve. Never open valve with out appropriate hoses and valve down stream of the valve, doing so will release anhydrous ammonia into the air that could cause sever injury.
6. Before open the valve turn off any down steam valve to prevent ammonia from spraying out into the air.
7. To open valve turn hand wheel counter clockwise all the way until the hand wheel stops turning. NEVER OPEN VALVE PARTIALLY, DOING SO WILL PREVENT ANY EXCESS FLOW CHECK IN THE SYSTEM FROM FUNCTIONING PROPERLY.
8. To close valve turn hand wheel counter clockwise and tighten firmly. NEVER LEAVE VALVE OPEN UNATTEDED OR WHILE TRAVELING DOWN A ROAD. VALVE SHOULD ONLY BE OPEN WHILE IN USE.
9. If valve is attached to a coupling, follow step 8 then drain connection with appropriate bleeder valve. Pay close attention to the direction the bleeder valve port is facing and make sure its pointing in a safe direction. See Coupling and bleeder valve operational instruction for more detailed instruction.

MAINTENANCE

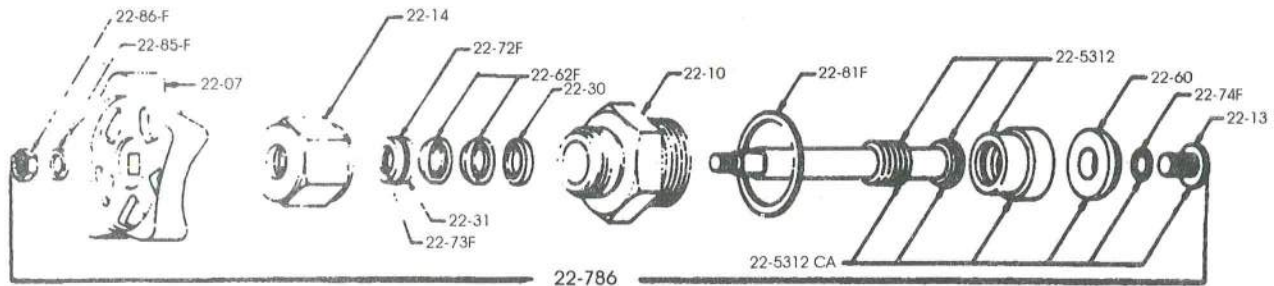
1. Check valve regularly for leaks and wear.
2. If any threads on the valve are getting warned down replace the valve immediately
3. If valve leaks from pipe thread connection try to tighten the valve to stop the leak. If it continues to leak replace the valve.
4. If valve leaks from the stem, 22-53 gently tighten 22-14 packing nut to stop leak. If this fails either replace the valve or install a repair kit, A-2212-RK immediately.
5. If valve leaks from bonnet, 22-10 or seat, 22-60, either replace valve or install repair kit, A-2212-RK immediately.

REPAIR

1. Remove valve from service by following the above ATTENTIONS AND CAUTIONS.
2. Remove bonnet assembly 22-10 and hand wheel from stem 22-53
3. Remove stem 22-5312 and packing nut 22-14 and remove all of the packing from the bonnet 22-10.
4. Unscrew 22-13 Allen screw and replace the 22-74-F o-ring and 22-60 seat and replace the Allen screw and tighten firmly.
5. reinstall the 22-30 washer bevel side up and install new Teflon packing 22-62-F bevel side up and replace the inside and outside orings 22-72 and 22-73 in the follower 22.31 and install it in to the bonnet flat side up
6. Place some grease on the threads of the bonnet where the 22-14 packing nut goes and reinstall the packing nut hand tight.
7. Reinstall the 22.5312 stem into the bonnet 22.10 by pushing gently and turning clockwise simultaneously until the stem is completely screwed all the way to the bonnet.
8. Put thread sealant on the threads of the bonnet that screws into the valve body and replace the 22-81-F bonnet gasket and reinstall the bonnet into the valve body and tighten the bonnet with a wrench.
9. Reinstall hand wheel onto stem 22-5312 and tighten packing nut 22-14 until snug. The tighter you get the packing nut the harder the hand wheel is to turn, adjust packing nut to desired tension.
10. Reinstall the valve into service by following the above installation instructions.

QUESTIONS CALL 800-537-5642

Catalog Number	Description	List Price	100 Piece Ship Wgt.
22 SERIES VALVES CATALOG NUMBERS: A-1201, A-1204, A-1205, A-1206, A-1250, A-1275, A-1350, A-1375, REPAIR PARTS.			
22-06	HAND WHEEL (VALVES MFG'D PRIOR TO 1972)		
22-07	HAND WHEEL (VALVES MFG'D AFTER 1972)		
22-10	BONNET		
22-13	SEAT RETAINER SCREW		
22-14	PACKING NUT		
22-30	PACKING RETAINER WASHER		
22-31	PACKING FOLLOWER		
22-31-72-73	PACKING FOLLOWER W/WIPER RINGS INSTALLED		
22-5312	STEM & SWIVEL POPPET ASSEMBLY		
22-5312-CA	STEM SWIVEL POPPET & SEAT ASSEMBLY		
22-60	NYLON SEAT		
22-62-F	TEFLON "V" RING PACKING (2)		
22-63-F	PLASTIC DUST CAP		
22-63-FC	PLASTIC DUST CAP W/ CHAIN		
22-71-F	CAP GASKET (HYCAR)		
22-71-NS	CAP GASKET (TEFLON)		
22-72-F	FOLLOWER WIPER "O" RING (EXTERNAL)		
22-73-F	FOLLOWER WIPER "O" RING (INTERNAL)		
22-74-F	SEAT SEAL "O" RING		
22-786	COMPLETE BONNET, STEM, SEAT ASSEMBLY W/ HAND WHEEL		
22-786-BP	SAME AS 22-786 W/ BY-PASS FEATURE (HYDROSTATIC)		
22-81-F	BONNET GASKET		
22-84-F	HANDWHEEL LOCK WASHER		
22-86-F	HAND WHEEL LOCK NUT		
22-93-F	HAND WHEEL LOCK NUT (VALVES PRIOR TO 1972)		
22-94-F	HAND WHEEL LOCK WASHER (VALVES PRIOR TO 1972)		
A-2212-RK	REPAIR KIT, INCLUDES - 22-31-72-73, 22-60, 22-62-F, 22-81-F		



CONTINENTAL NH 3 PRODUCTS CO., INC.

130 YORKTOWN

P.O. BOX 225323

DALLAS, TEXAS 75222-5323

800-537-5642