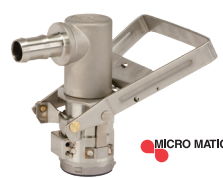




STAINLESS RSV DISPENSE
COUPLER THREADED LIQUID
VERTICAL OUTLET
DP-R5072 EPDM



STAINLESS STEEL RSV
DISPENSE COUPLER
BARBED LIQUID OUTLET
DP-R3713 EPDM



POLY RSV DISPENSE
COUPLER BARBED
LIQUID OUTLET
DP-R3714 EPDM



STAINLESS STEEL RSV
FILL COUPLER
DP-R4027 EPDM



DEF DURA-METER™
FACE PLATE
DP-MFP01-D



DEF STAINLESS AUTO
SHUT-OFF NOZZLE
WITH STAINLESS STEEL
SPOUT AND SWIVEL
DP-N4001



DEF POLY AUTO
SHUT-OFF NOZZLE
WITH STAINLESS STEEL
SPOUT AND SWIVEL
DP-N4005



DEF POLY MANUAL NOZZLE
WITH STAINLESS STEEL
SPOUT AND POLY SWIVEL
DP-N4003



DEF POLY MANUAL NOZZLE
WITH POLY SPOUT
DP-N4006



DEF DURA-PUMP™
BOTTOM HOUSING KIT
WITH BOTTOM GASKET
AND SCREWS
DP-H4001A-E EPDM



STAINLESS STEEL RSV
CONTAINER VALVE 2.5" X 5"
BUTTRESS THREAD
DP-R4097-E EPDM



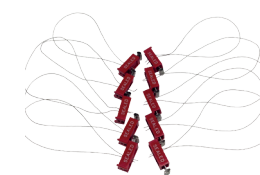
POLY RSV CONTAINER VALVE
2.5" X 5" BUTTRESS THREAD
DP-R2682 EPDM



DEF DURA-PUMP™
GASKET KIT
DP-G4001A-E EPDM



DEF DURA-PUMP™
CARTRIDGE KIT WITH
O-RING AND
BOTTOM GASKET
DP-P4017A-D



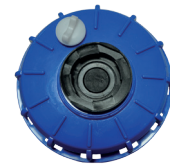
TAMPER EVIDENT SEALS
DP-P5500 100 PACK
DP-P5501 10 PACK



6" IBC CAP WITH
2" BUTTRESS BUNG
DP-C4001B-E



6" IBC CAP WITH MANUAL
VENTED LID AND
2" BUTTRESS BUNG
DP-C4004B-E



6" IBC CAP WITH MANUAL
VENTED LID AND RSV
CONTAINER VALVE
DP-C4003B-E



6" IBC CAP WITH
2" NPT BUNG
DP-C4009B-E



6" IBC CAP WITH DUAL
ACTION VENT
DP-C4010B-E



STAINLESS STEEL RSV
CONTAINER VALVE TOOL
INSTALL/REMOVAL
DP-R4084



BUTTRESS TO NPT
ADAPTER 2" X 2"
DP-A4001



EASY SEAL DUAL
ACTION AUTO
VENT 2" NPT
DP-V4002



DEF DOWN TUBE

55 Gallon Drum 32" Length
135 Gallon IBC Tote 22" Length
275 Gallon IBC Tote 37.8" Length
330 Gallon IBC Tote 45" Length



DP-T4810
DP-T3810
DP-T4960
DP-T4135



1" NPT TELESCOPING DOWN TUBE DP-T4001



DEF 135 GALLON TANK



DEF 275 GALLON TANK



DEF 330 GALLON TANK



PREMIUM
HIGH-FLOW
AG CHEMICAL
TRANSFER SYSTEMS

UP TO
15GPM



10+GPM
DEF
DISPENSING
SYSTEMS



DURA-METER™

- / New meter design made of impact resistant Lexan™ faceplate
- / 100% moisture-sealed circuitry makes meter impervious to water intrusion
- / Same great menu driven backlit display
- / Plumbed both for in-line and 90 degree applications
- / Includes 2 Year Warranty

DP-3000E EPDM | DP-3000V Viton®

Must specify EPDM (product # and E) or Viton® (product # and V) when ordering.

Specifications	
Operating Temp	-10°F to 130°F
Flow Rate	2 to 22GPM
Meter Accuracy	+ / - .5%
Backlit Display	Yes
Maximum Pressure	40 PSI
Wetted Materials	Polypropylene; 304 Stainless Steel; Ryton; EPDM or Viton® seals

NEW Features

- / Meter is now supported by a Quick List reference chart
- / Extended battery life with use of 4 "AAA" batteries
- / Faceplate over-molded with santoprene and filled with gel for improved shock resistance

Customer should always
check calibration before use



IBC/CAGE TOTE EXPLODED VIEW

MICRO MATIC RSV & RPV Closed Systems

Fill Coupler DP-R4027 RSV Stainless Steel

For use by manufacturer and jobber to fill/refill from bulk and for on-site refilling in the field. Provides flow rate of 49 GPM.

A Liquid Inlet:

1" NPT Male Thread attaches to fill hose.

B Vapor Recovery Outlet:

1/4" NPT Female Thread attaches to hose from bulk tank to create a closed loop filling environment.

C Keyed Connection:

4 Pin Male Key connects to Container Valve for filling.

BARBED Dispense Coupler

DP-R3713 RSV
Stainless Steel

DP-R3714 RPV
Poly

VERTICAL Dispense Coupler

DP-R5072 RSV
Stainless Steel

D Liquid Outlet:

Attaches to dispense pump hose.

E Keyed Connection:

4 Pin Male Key connects to Container Valve for dispensing.

6" IBC Cap
DP-C4001B-E
DP-C4004B-E Vented

IBC/Cage Tank
135 gallon
275 gallon
330 gallon

4 Tamper Evident Wire Seal

DP-P5501 10PK
Installed and secured through container valve eyelet, center cap and IBC eyelet. Protects from unauthorized removal of the Container Valve.

5 Container Valve

DP-R4097-E RSV
Stainless Steel

DP-R2682 RPV
Poly

Connects to Down Tube (#6) to create Container Valve Assembly. Container Valve Assembly 2.5" x 5 buttress thread installs into center cap.

F Keyed Connection:

4 Cam Female Key connects to 4 Pin Couplers to control and manage filling and dispensing.

6 Down Tube

135 gal DP-T3810
275 gal DP-T4960
330 gal DP-T4135

NOTE: Length varies based on size of container and installation type: 135, 275 and 330 gallon IBC

7 RSV/RPV Container Valve Installation / Removal Tool

DP-R4084
Stainless Steel

Attaches to 1/2" Drive Torque Wrench to install the RSV/RPV Container Valve Assembly.

Torque Specifications:

RSV Container Valve is 25 ft./lbs.
RPV Container Valve is 20 ft./lbs.

(For use by Installer only)



55 GALLON DRUM EXPLODED VIEW

MICRO MATIC *RSV & RPV Closed Systems*

Fill Coupler

DP-R4027 RSV
Stainless Steel

For use by manufacturer and jobber to fill/refill from bulk and for on-site refilling in the field. Provides flow rate of 49 GPM.

A Liquid Inlet:

1" NPT Male Thread attaches to fill hose.

B Vapor Recovery Outlet:

1/4" NPT Female Thread attaches to hose from bulk tank to create a closed loop filling environment.

C Keyed Connection:

4 Pin Male Key connects to Container Valve for filling.

BARBED Dispense Coupler

DP-R3713 RSV
Stainless Steel

DP-R3714 RPV
Poly

VERTICAL Dispense Coupler

DP-R5072 RSV
Stainless Steel

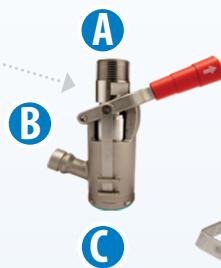
D Liquid Outlet:

3/4" Barb attaches to dispense pump suction hose.

E Keyed Connection:

4 Pin Male Key connects to Container Valve for dispensing.

1



4

Tamper Evident Wire Seal

DP-P5501 10pk

Installed and secured through container valve eyelet, center cap and IBC eyelet.

Protects from unauthorized removal of the Container Valve.

5

Container Valve

DP-R4097-E RSV
Stainless Steel

DP-R2682 RPV
Poly

Connects to Down Tube (#6) to create Container Valve Assembly.

Container Valve Assembly 2.5" x 5" buttress thread installs into center cap.

F Keyed Connection:

4 Cam Female Key connects to 4 Pin Couplers to control and manage filling and dispensing.

6

Down Tube 55 gal

DP-T4810

7



RSV/RPV Container Valve Installation / Removal Tool

DP-R4084
Stainless Steel

Attaches to 1/2" Drive Torque Wrench to install the RSV/RPV Container Valve Assembly.

Torque Specifications:

RSV Container Valve is 25 ft./lbs.

RPV Container Valve is 20 ft./lbs.

(For use by Installer only)

8

Dual Action Auto Vent

DP-V4002



DURA-PUMP™

/ High-Flow with up to 15GPM flow rate

/ Self-priming diaphragm pump with internal by-pass

/ Motor thermally protected from overheating

/ 30 minute duty cycle

/ Suction port has 2" Male NPT and 1" Female NPT

/ Pump is easily field serviceable

/ Includes 2 Year Warranty

DP-4012 12 volt

DP-4015 110 volt

(Available in EPDM or Viton®)

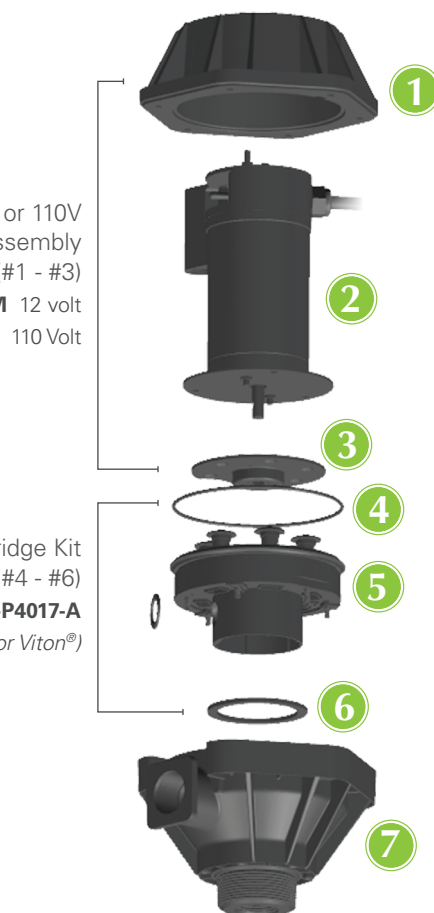
Must specify EPDM (product # and E) or Viton® (product # and V) when ordering.

Specifications

Check Valve	Internal; EPA 165.45 compliant
Vertical Suction Lift	Self-priming to 10ft
Power Cord	12 Volt: 20ft; 110 Volt: 6.5ft
Motor	1/4 HP
Amps	12 Volt: 18.5; 110 Volt: 2.0
Suction Port	2" Male and 1" Female NPT thread
Discharge Port	1" Female NPT thread
Wetted Materials	Polypropylene; Santoprene; EPDM or Viton® seals; 304 Stainless Steel

12V or 110V
Motor Assembly
(#1 - #3)
DP-P4012-M 12 volt
DP-P4015-M 110 Volt

Cartridge Kit
(#4 - #6)
DP-P4017-A
(EPDM or Viton®)



- 1 Upper Housing
DP-P4002A
- 2 12V or 110V Motor
- 3 Drive Plate
- 4 O-ring
DP-P4004AO (EPDM or Viton®)
- 5 Cartridge
DP-P4017A (EPDM or Viton®)
- 6 Bottom Gasket
DP-P4001AG (EPDM or Viton®)
- 7 Bottom Housing
DP-H4001A (EPDM or Viton®)

Individual Parts shown listed on page 13