

# Nylon Line Strainers

1/4" through 1-1/2" sizes (See other side for polypropylene list.)

**California Proposition 65 Warning --**  
 This product and related accessories contain chemicals known to the State of California to cause cancer, birth defects or other reproductive harm.

## Specifications

This low-profile strainer features both 1/4" NPT internal and 1/2" NPT external threads. A clear polyamide bowl allows for visual inspection without disassembly.

Strainers (Ref. 2, 3, 4 & 5) are available in 1/2", 3/4", 1", 1-1/4" and 1-1/2" NPT internal threads. A white bowl is standard and a clear polyamide bowl is optional.

The cap and bowl are made of nylon 6. (Designate the optional clear polyamide bowl by adding a "P" suffix to the model number.) Screens come in 20, 50 or 80-mesh stainless steel. Buna-N or Viton gaskets are available.

Ratings: 150 psi at 70° F, 100 psi at 125° F. (140° F is the maximum temperature.)



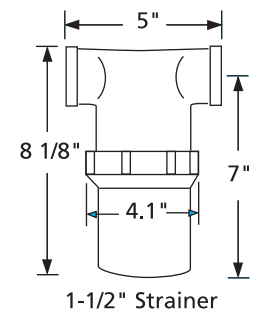
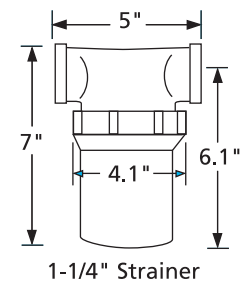
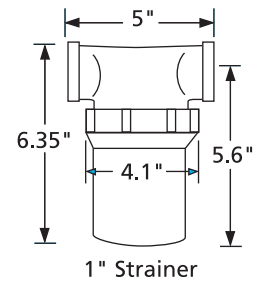
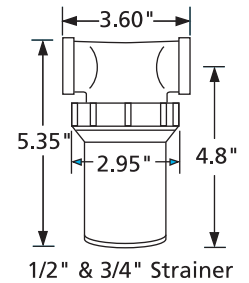
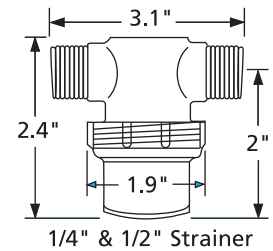
## Installation

In most circumstances, install the line strainer on the inlet side of the pump. If using a centrifugal pump, a strainer can be installed on either the inlet or discharge side, depending on the strainer flow capacity, strainer pressure rating and other installation factors. The arrow molded in the strainer cap indicates flow of liquid.

**NOTE: The clear polyamide bowl is not recommended for use with alcohol.**

Clean the strainer without removing it from the line. Simply unscrew the bowl from the cap and take out the screen. Next, flush the sediment from the screen. Reassemble the strainer by first fitting the screen to the flange in the bowl. Turn the bowl hand tight, which provides a sufficient seal against the cap. **NOTE: Not recommended for fatigue-loading applications such as water softeners.**

## Dimensions (in inches)



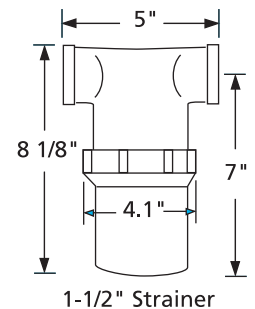
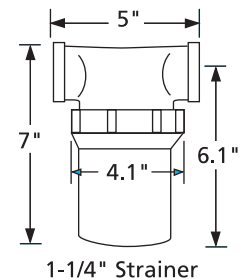
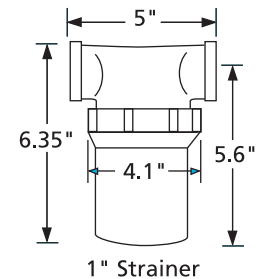
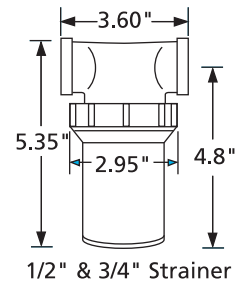
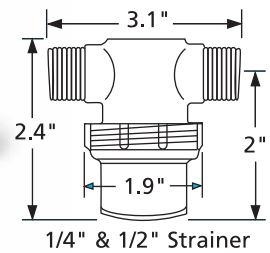
## Line Strainer Data

| NPT Threads             | Model Number | Screen      | Gasket | Open Area    | Parts List |            |           |           |
|-------------------------|--------------|-------------|--------|--------------|------------|------------|-----------|-----------|
|                         |              |             |        |              | Cap        | Bowl       | Screen    | Gasket    |
| 1/4" I.D. and 1/2" O.D. | 3350-0085    | 20 SS       | Buna-N | 2.17 sq. in. | 3351-0022  | 3351-0020  | 3800-0048 | 1700-0064 |
|                         | 3350-0085F   | 20 SS       | Viton  | 2.17 sq. in. | 3351-0022  | 3351-0020  | 3800-0048 | 1700-0065 |
|                         | 3350-0079    | 50 SS       | Buna-N | 1.75 sq. in. | 3351-0022  | 3351-0020  | 3800-0046 | 1700-0064 |
|                         | 3350-0079F   | 50 SS       | Viton  | 1.75 sq. in. | 3351-0022  | 3351-0020  | 3800-0046 | 1700-0065 |
|                         | 3350-0082    | 80 SS       | Buna-N | 1.34 sq. in. | 3351-0022  | 3351-0020  | 3800-0047 | 1700-0064 |
|                         | 3350-0082F   | 80 SS       | Viton  | 1.34 sq. in. | 3351-0022  | 3351-0020  | 3800-0047 | 1700-0065 |
| 1/2"                    | 3350-0131    | 20 SS       | Viton  | 9.6 sq. in.  | 3351-0007  |            | 3800-0029 | 1700-0045 |
|                         | 3350-0056    | 20 SS       | Buna-N | 9.6 sq. in.  | 3351-0007  | Clear Bowl | 3800-0029 | 1700-0044 |
|                         | 3350-0046    | 50 SS       | Buna-N | 7.7 sq. in.  | 3351-0007  | 3351-0015  | 3800-0025 | 1700-0044 |
|                         | 3350-0042    | 50 SS       | Viton  | 7.7 sq. in.  | 3351-0007  | White Bowl | 3800-0025 | 1700-0045 |
|                         | 3350-0043    | 80 on 20 SS | Buna-N | 5.9 sq. in.  | 3351-0007  | 3351-0005  | 3800-0026 | 1700-0044 |
|                         | 3350-0068    | 80 on 20 SS | Viton  | 5.9 sq. in.  | 3351-0007  | 3800-0026  | 1700-0045 |           |
| 3/4"                    | 3350-0132    | 20 SS       | Viton  | 9.6 sq. in.  | 3351-0006  |            | 3800-0029 | 1700-0045 |
|                         | 3350-0040    | 20 SS       | Buna-N | 9.26 sq. in. | 3351-0006  | Clear Bowl | 3800-0029 | 1700-0044 |
|                         | 3350-0034    | 50 SS       | Buna-N | 7.7 sq. in.  | 3351-0006  | 3351-0015  | 3800-0025 | 1700-0044 |
|                         | 3350-0044    | 50 SS       | Viton  | 7.7 sq. in.  | 3351-0006  | White Bowl | 3800-0025 | 1700-0045 |
|                         | 3350-0035    | 80 on 20 SS | Buna-N | 5.9 sq. in.  | 3351-0006  | 3351-0005  | 3800-0026 | 1700-0044 |
|                         | 3350-0045    | 80 on 20 SS | Viton  | 5.9 sq. in.  | 3351-0006  | 3800-0026  | 1700-0045 |           |
| 1"                      | 3350-0057    | 20 SS       | Buna-N | 16.8 sq. in. | 3351-0014  |            | 3800-0040 | 1700-0057 |
|                         | 3350-0060    | 20 SS       | Viton  | 16.8 sq. in. | 3351-0014  | Clear Bowl | 3800-0040 | 1700-0058 |
|                         | 3350-0058    | 50 SS       | Buna-N | 13.5 sq. in. | 3351-0014  | 3351-0024  | 3800-0041 | 1700-0057 |
|                         | 3350-0061    | 50 SS       | Viton  | 13.5 sq. in. | 3351-0014  | White Bowl | 3800-0041 | 1700-0058 |
|                         | 3350-0059    | 80 on 20 SS | Buna-N | 10 sq. in.   | 3351-0014  | 3351-0013  | 3800-0042 | 1700-0057 |
|                         | 3350-0062    | 80 on 20 SS | Viton  | 10 sq. in.   | 3351-0014  | 3800-0042  | 1700-0058 |           |
| 1-1/4"                  | 3350-0071    | 20 SS       | Buna-N | 18 sq. in.   | 3351-0016  |            | 3800-0043 | 1700-0057 |
|                         | 3350-0074    | 20 SS       | Viton  | 18 sq. in.   | 3351-0016  | Clear Bowl | 3800-0043 | 1700-0058 |
|                         | 3350-0072    | 50 SS       | Buna-N | 14.5 sq. in. | 3351-0016  | 3351-0024  | 3800-0044 | 1700-0057 |
|                         | 3350-0075    | 50 SS       | Viton  | 14.5 sq. in. | 3351-0016  | White Bowl | 3800-0044 | 1700-0058 |
|                         | 3350-0073    | 80 on 20 SS | Buna-N | 11 sq. in.   | 3351-0016  | 3351-0013  | 3800-0045 | 1700-0057 |
|                         | 3350-0076    | 80 on 20 SS | Viton  | 11 sq. in.   | 3351-0016  | 3800-0045  | 1700-0058 |           |
| 1-1/2"                  | 3350-0112    | 20 SS       | Buna-N | 20.8 sq. in. | 3351-0026  |            | 3800-0065 | 1700-0057 |
|                         | 3350-0115    | 20 SS       | Viton  | 20.8 sq. in. | 3351-0026  | Clear Bowl | 3800-0065 | 1700-0058 |
|                         | 3350-0113    | 50 SS       | Buna-N | 16.4 sq. in. | 3351-0026  | 3351-0024  | 3800-0066 | 1700-0057 |
|                         | 3350-0116    | 50 SS       | Viton  | 16.4 sq. in. | 3351-0026  | White Bowl | 3800-0066 | 1700-0058 |
|                         | 3350-0114    | 80 on 20 SS | Buna-N | 12.4 sq. in. | 3351-0026  | 3351-0013  | 3800-0067 | 1700-0057 |
|                         | 3350-0117    | 80 on 20 SS | Viton  | 12.4 sq. in. | 3351-0026  | 3800-0067  | 1700-0058 |           |

**HYPRO®**

# Polypropylene Line Strainers

 1/4" through 1-1/2" sizes  
 (See other side for nylon list.)

**Dimensions  
(In Inches)**


**California Proposition 65 Warning --**  
 This product and related accessories contain chemicals known to the State of California to cause cancer, birth defects or other reproductive harm.

**Specifications**

This low-profile strainer features both 1/4" NPT internal and 1/2" NPT external threads. Strainers (Ref. 2, 3, 4 & 5) are available in 1/2", 3/4", 1", 1-1/4" and 1-1/2" NPT internal threads.

The cap and bowl are available in black polypropylene. Screens come in 20, 50 or 80-mesh stainless steel. EPDM gaskets are standard.

Ratings: 80 psi at 70° F.

**Installation**

In most circumstances, install the line strainer on the inlet side of the pump. If using a centrifugal pump, a strainer can be installed on either the inlet or discharge side, depending on the strainer flow capacity, strainer pressure rating and other installation factors. The arrow molded in the strainer cap indicates flow of liquid.

Clean the strainer without removing it from the line. Simply unscrew the bowl from the cap and take out the screen. Next, flush the sediment from the screen. Reassemble the strainer by first fitting the screen to the flange in the bowl. Turn the bowl hand tight, which provides a sufficient seal against the cap. **NOTE: Not recommended for fatigue-loading applications such as water softeners.**

**Line Strainer Data**

| NPT Number            | Model Threads | Screen      | Gasket | Open Area (sq. in.) | Parts List |           |           |           |
|-----------------------|---------------|-------------|--------|---------------------|------------|-----------|-----------|-----------|
|                       |               |             |        |                     | Cap        | Bowl      | Screen    | Gasket    |
| 1/4" I.D. & 1/2" O.D. | 3350-0085A    | 20 SS       | EPDM   | 2.17                | 3351-0035  | 3351-0036 | 3800-0048 | 1700-0090 |
|                       | 3350-0079A    | 50 SS       | EPDM   | 1.75                | 3351-0035  | 3351-0036 | 3800-0046 | 1700-0090 |
|                       | 3350-0082A    | 80 SS       | EPDM   | 1.34                | 3351-0035  | 3351-0036 | 3800-0047 | 1700-0090 |
| 1/2"                  | 3350-0056A    | 20 SS       | EPDM   | 9.6                 | 3351-0037  | 3351-0039 | 3800-0029 | 1700-0091 |
|                       | 3350-0046A    | 50 SS       | EPDM   | 7.7                 | 3351-0037  | 3351-0039 | 3800-0025 | 1700-0091 |
|                       | 3350-0043A    | 80 on 20 SS | EPDM   | 5.9                 | 3351-0037  | 3351-0039 | 3800-0026 | 1700-0091 |
| 3/4"                  | 3350-0040A    | 20 SS       | EPDM   | 9.6                 | 3351-0038  | 3351-0039 | 3800-0029 | 1700-0091 |
|                       | 3350-0034A    | 50 SS       | EPDM   | 7.7                 | 3351-0038  | 3351-0039 | 3800-0025 | 1700-0091 |
|                       | 3350-0035A    | 80 on 20 SS | EPDM   | 5.9                 | 3351-0038  | 3351-0039 | 3800-0026 | 1700-0091 |
| 1"                    | 3350-0057A    | 20 SS       | EPDM   | 16.8                | 3351-0040  | 3351-0043 | 3800-0040 | 1700-0092 |
|                       | 3350-0058A    | 50 SS       | EPDM   | 13.5                | 3351-0040  | 3351-0043 | 3800-0041 | 1700-0092 |
|                       | 3350-0059A    | 80 on 20 SS | EPDM   | 10.0                | 3351-0040  | 3351-0043 | 3800-0042 | 1700-0092 |
| 1-1/4"                | 3350-0071A    | 20 SS       | EPDM   | 18.0                | 3351-0041  | 3351-0043 | 3800-0043 | 1700-0092 |
|                       | 3350-0072A    | 50 SS       | EPDM   | 14.5                | 3351-0041  | 3351-0043 | 3800-0044 | 1700-0092 |
|                       | 3350-0073A    | 80 on 20 SS | EPDM   | 11.0                | 3351-0041  | 3351-0043 | 3800-0045 | 1700-0092 |
| 1-1/2"                | 3350-0112A    | 20 SS       | EPDM   | 20.0                | 3351-0042  | 3351-0043 | 3800-0065 | 1700-0092 |
|                       | 3350-0113A    | 50 SS       | EPDM   | 16.4                | 3351-0042  | 3351-0043 | 3800-0066 | 1700-0092 |
|                       | 3350-0114A    | 80 on 20 SS | EPDM   | 12.4                | 3351-0042  | 3351-0043 | 3800-0067 | 1700-0092 |