



QJ8360-NYB



QJT8360-NYB  
QJP19011-NYB

### QJT8360-NYB, QJP19011-NYB & QJ8360-NYB

- Retrofits to a Quick TeeJet system.
- Features ChemSaver® no-drip shutoff. Requires 10 PSI at the nozzle to open check valve.
- Standard diaphragm of EPDM with optional FKM available upon request.
- Maximum operating pressure of 300 PSI.
- Flow rate: 2.25 GPM at 5 PSI pressure drop, 3.18 GPM at 10 PSI pressure drop.

PART NUMBER	INLET
QJ(B)8360-NYB	¼" (M) Thread
QJT8360-NYB	1/16"-16 (F) TeeJet Thread
QJP19011-NYB	3/8" (F) BSPP Thread
QJ8360-1/4F-NYB	¼" (F) Thread

(B)=BSPT

### QJ8355-NYB

- Allows use of Quick TeeJet system with 1/8" and 1/4" NPT female connections.
- Side mounting provides protection of the nozzle body.
- Features no-drip shutoff. Requires 10 PSI at the nozzle to open check valve.
- Standard diaphragm of EPDM with optional FKM available upon request.
- Maximum operating pressure of 300 PSI.
- Flow rate: 2.25 GPM at 5 PSI pressure drop, 3.18 GPM at 10 PSI pressure drop.



PART NUMBER	INLET
QJ8355-1/8-NYB	1/8" (F)
QJ8355-1/4-NYB	1/4" (F)

### QJ1/4TT-NYB

- Allows use of Quick TeeJet system with 1/4" NPT and BSPT male connections.
- Maximum operating pressure of 300 PSI.



PART NUMBER	INLET
QJ(B)1/4TT-NYB	¼" (M) Thread

(B)=BSPT

### QJ1/4T-NYB & QJT-NYB

- QJ1/4T-NYB allows use of Quick TeeJet system with 1/4" NPT and BSPT female connections.
- QJT-NYB permits use of Quick TeeJet system with standard 1/16"-16 TeeJet thread.
- Maximum operating pressure of 300 PSI.

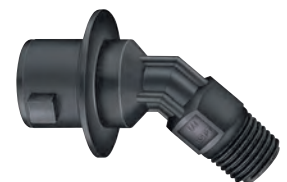


PART NUMBER	INLET
(B)QJ1/4T-NYB	¼" (F) Thread
QJT-NYB	1/16"-16 (F) TeeJet Thread

(B)=BSPT

### 22674-1/4-NYB

- Allows use of Quick TeeJet system with 1/4" NPT or BSPT male connections.



PART NUMBER	INLET
(B) 22674-1/4-NYB	¼" (M) Thread

(B)=BSPT