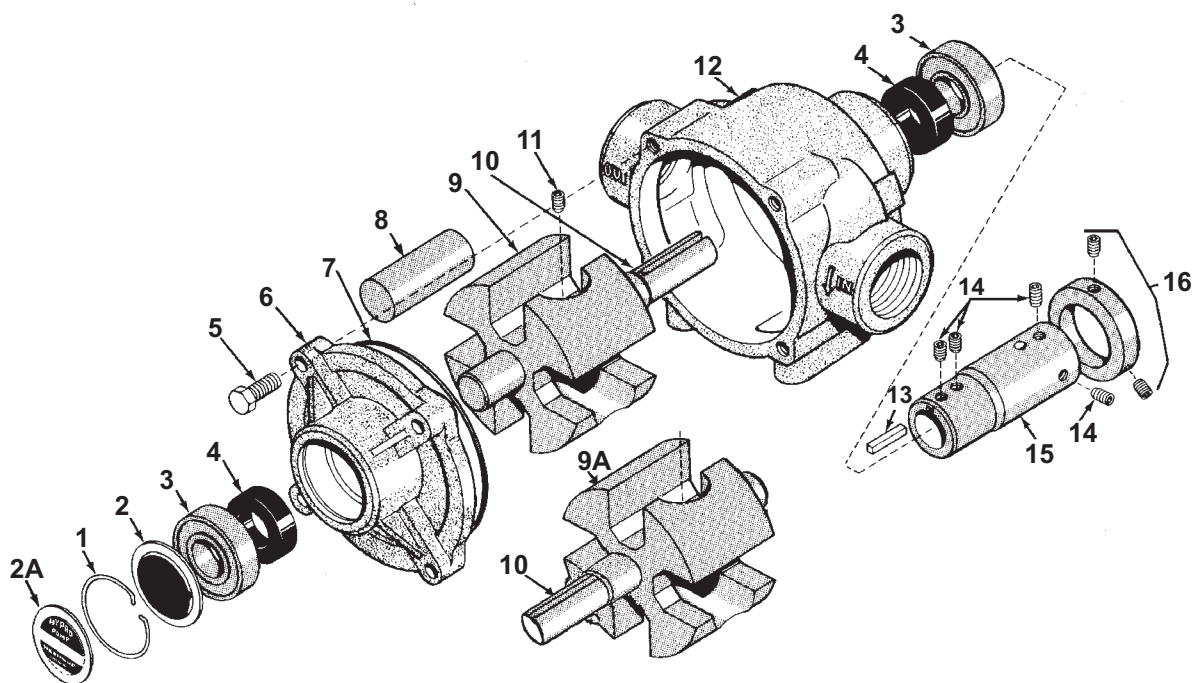


Model 1200



Ref. No.	Qty. Req'd.	Part Number	Description
1	1	1800-0013	Retainer Ring
2	1	2840-0049	Bearing Cover
2A	1	6031-0258	Name Plate (Specify Pump Model #)
3	2	2001-0006	Ball Bearing
4	2	2112-0008	Buna-N Seal (Standard)
4	2	2112-0009	Viton Seal (Optional)
5	4	2210-0019	Hex Head Bolt
6	1	0200-1200C	Endplate (Cast Iron) with Seal
7	1	1720-0127	O-ring Gasket for Endplate
8	4	1005-0006	Super Roller (Standard)
9	1	0300-1200C	Rotor (Cast Iron) with shaft (Std. Rotation)
9A	1	0301-1200C	Rotor (Cast Iron) with shaft (Rev. Rotation)

Ref. No.	Qty. Req'd.	Part Number	Description
10	1	0500-1200	Shaft
11	1	2230-0018	Set Screw
12	1	0100-1200C	Body (Cast Iron) with Seal
13	1	1610-0005	Key
14	1 kit	3410-0031	Set Screw Kit
15	1	1320-0081	1-3/8" 6-spline 540 rpm PTO Adapter (Forged Steel) Includes Kit No. 3410-0031 Sold Separately
16	1 kit	3430-0207	Locking Collar Kit — Sold Separately Includes: (1) Collar and (2) Set Screws

Parts Kit No. 3430-0374 Consists of (4) Ref. 8 Super Rollers, (1) Ref. 7 O-Ring, and (2) Ref. 4 Buna-N Seals.

Locking Collar Kit No. 3430-0207 For Series 1200 Roller Pumps

This locking collar kit holds the pump driver shaft securely on the tractor PTO shaft. It is designed to increase pump life by reducing pump and PTO shaft wear due to vibration. To install locking collar:

1. Slide collar onto pump driver shaft.
2. Thread the longer set screw through the locking collar and partially through the threaded hole in the pump driver shaft. **IMPORTANT:** It is necessary to allow a minimum of 1/8" clearance between the locking collar and the pump driver shaft at set screw.

3. Thread the shorter set screw into the other threaded hole in the locking collar.
4. Slide pump driver hub over PTO shaft. Be sure PTO groove is under set screw.
5. Tighten the longer screw very securely with a 3/16" allen wrench.
6. Tighten the shorter set screw very securely with the same wrench. This binds set screw which prevents it from coming loose.
7. **NOTE:** Locking collar is off-center on the pump driver shaft when properly installed.