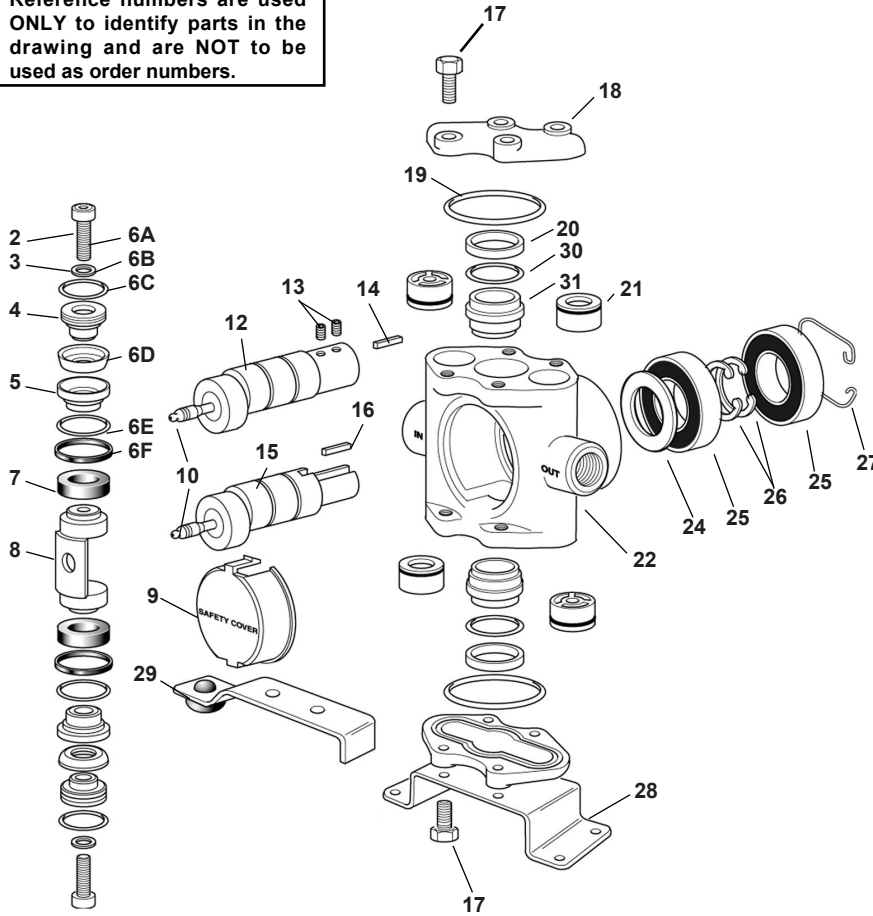


Replacement Parts

Models 5315C-X, 5320C-X, 5325C-X and 5330C-X

NOTE: When ordering parts, give **QUANTITY, PART NUMBER, DESCRIPTION, and COMPLETE MODEL NUMBER.** Reference numbers are used **ONLY** to identify parts in the drawing and are **NOT** to be used as order numbers.



Piston Stack Parts Kit

Leather Cup Kit No. 3430-0007

Consists of two each of the following parts: No. 2220-0012 Piston Cap Screw (Ref. 6A), No. 2270-0011 Washer (Ref. 6B), No. 1720-0029 O-ring (Ref. 6C), No. 2150-0002 Leather Cup (Ref. 6D), No. 1720-0039 O-Ring (Ref. 6E), and No. 1440-0008 Seal Ring (Ref. 6F).

Rubber Cup Kit No. 3430-0009

Same as above kit except with No. 2150-0005 Rubber Cups.

Piston Stack and Guide Parts Kits

Leather Cup and Guide Kit No. 3430-0008

Consists of Leather Cup Kit No. 3430-0007 plus two No. 1440-0004 Piston Guides (Ref. 7).

Rubber Cup and Guide Kit No. 3430-0010

Consists of Rubber Cup Kit No. 3430-0009 plus two No. 1440-0004 Piston Guides.

Teflon Cup and Guide Kit No. 3430-0046

Consists of Teflon Cup Stack Kit plus 2 Piston Guides.

Ni-Resist Cylinder Sleeve Assembly Kit No. 3430-0209

Consists of two each of No. 1830-0033 Retainer (Ref. 20), No. 1720-0079 O-ring (Ref. 30), and No. 3550-0018 Sleeve (Ref. 31).

Ref. No.	Qty. Req'd.	Part No.	Description
2	2	2220-0012	Piston Cap Screw
3	2	2270-0011	Washer
4	2	1830-0017	Piston Cup Spreader
5	2	1410-0030	Cup Backing Plate
6	1		Piston Stack Parts Kit (see listing above)
7	2	1440-0004	Piston Guide
8	1	0502-5300	Connecting Rod
9	1	0608-5300	Safety Cover
10	1	2405-0006	Grease Fitting Assembly
12A	1	5501-5315	Pump 5315C-H Hollow Shaft with 5/8" (I.D.)
12B	1	5501-5320	Pump 5320C-H Hollow Shaft with 5/8" (I.D.)
12C	1	5501-5325	Pump 5325C-H Hollow Shaft with 5/8" (I.D.)
12D	1	5501-5330	Pump 5330C-H Hollow Shaft with 5/8" (I.D.)
12E	1	5500-5315	Pump 5315C-H Hollow Shaft with 5/8" (I.D.)
12F	1	5500-5320	Pump 5320C-H Hollow Shaft with 5/8" (I.D.)
12G	1	5500-5325	Pump 5325C-H Hollow Shaft with 5/8" (I.D.)
12H	1	5500-5330	Pump 5330C-H Hollow Shaft with 5/8" (I.D.)
13	2	2230-0017	Set Screw for Hollow Shaft
14	1	1610-0011	Spline Key for Hollow Shaft

Ref. No.	Qty. Req'd.	Part No.	Description
15A	1	5501-5315	Pump 5315C Solid Shaft with 5/8" (I.D.)
15A	1	5501-5320	Pump 5320C Solid Shaft with 5/8" (I.D.)
15A	1	5501-5325	Pump 5325C Solid Shaft with 5/8" (I.D.)
15A	1	5501-5330	Pump 5330C Solid Shaft with 5/8" (I.D.)
15A	1	5500-5315	Pump 5315C Solid Shaft with 5/8" (I.D.)
15A	1	5500-5320	Pump 5320C Solid Shaft with 5/8" (I.D.)
15A	1	5500-5325	Pump 5325C Solid Shaft with 5/8" (I.D.)
15A	1	5500-5330	Pump 5330C Solid Shaft with 5/8" (I.D.)
16	1	1610-0007	Spline Key for Solid Shaft
17	8	2210-0062	Cylinder Head Bolt
18	2	0204-5300C	Cylinder Head (Cast Iron)
19	2	1720-0038	O-ring for Cylinder Head
20	1	3430-0209	Sleeve Assembly
21	1 set	3430-0197	Valve Assemblies
22	1	0108-5300C	Body (Cast Iron)
24	1	2130-0007	Bearing Shield
25	2	2008-0001	Main Bearing (Ball Bearing)
26	2	1810-0013	Bearing Retainer Ring (shaft)
27	1	1820-0025	Bearing Retainer Ring (housing)
28	1	1510-0056	Mounting Base
29	1	2820-0040	Torque Arm - for Electric Motor Mounting
30	1	3430-0209	
31	1	3430-0209	