



FRX 75

3/4" x 3/4" End Suction Centrifugal Pump

Model FRX 75 is a high performance 316 stainless steel centrifugal pump. The pump is ideal for marine, agricultural, commercial or industrial transfer applications of compatible fluids.

The FRX75 model features all 316 stainless steel components for superior corrosion resistance when pumping chemical compounds. A carbon / ceramic / Viton bellows shaft seal is standard. Ports are 3/4" NPT. Marine ignition protected motors (ISO 8846) available. Pump rotation in 90° increments.



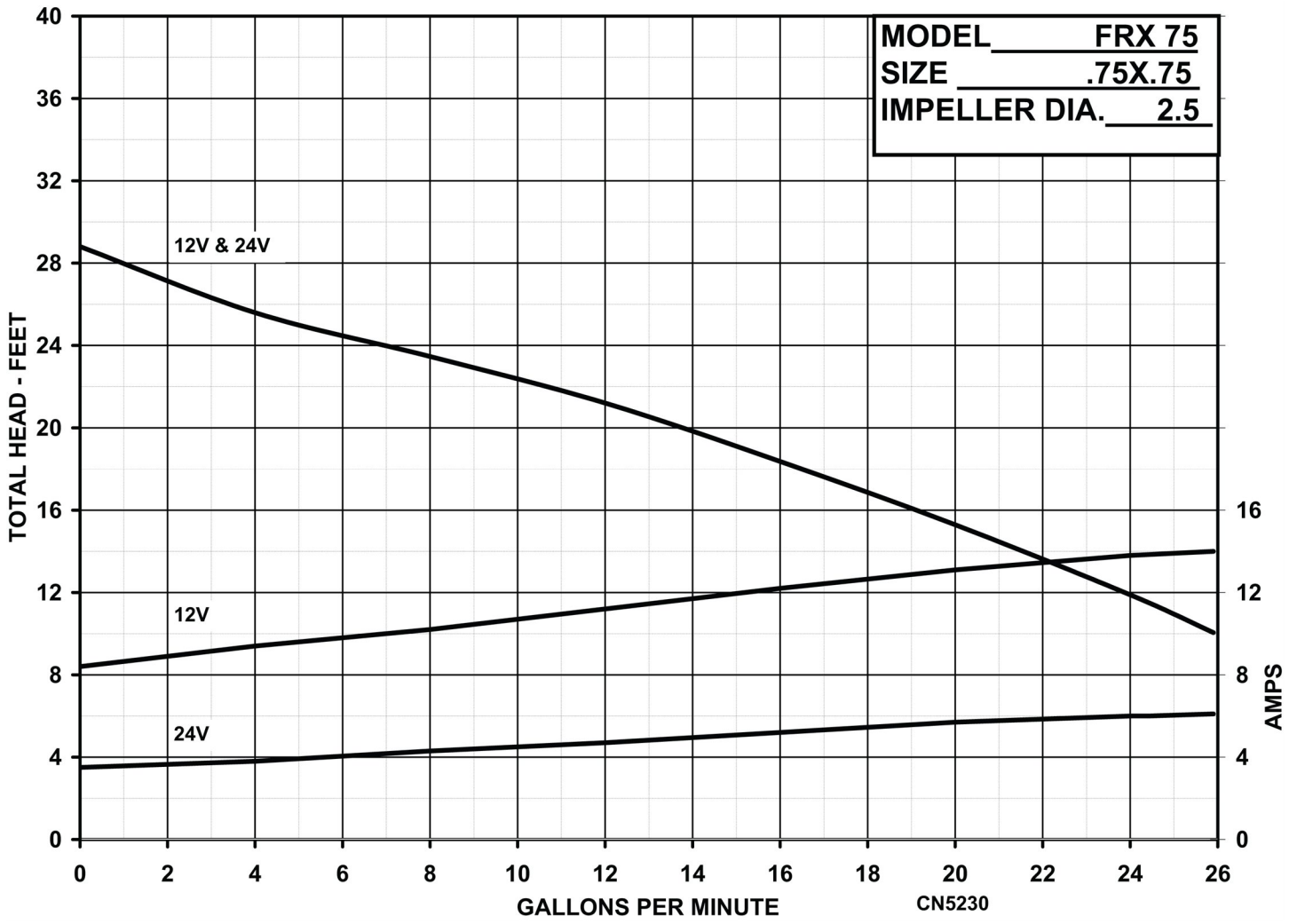
SPECIFICATIONS:

- Suction and Discharge . . . 3/4" NPT x 3/4" NPT
- Materials of Construction 316 stainless steel
- Flow Up to 28 GPM
- Head Feet Up to 38'
- Impeller 316 stainless steel
 - Semi-open (sintered PM)
- Motor ISO 8846 motor available
- Drive Options Close coupled 115V AC
 - Close coupled 12V DC
 - Close coupled 230V AC
 - Close coupled 24V DC
 - Close coupled 32V DC
- Seal Carbon / ceramic / Viton bellows 150 PSI
 - Special seals upon request
 - Standard - carbon / ceramic / Viton

Application:

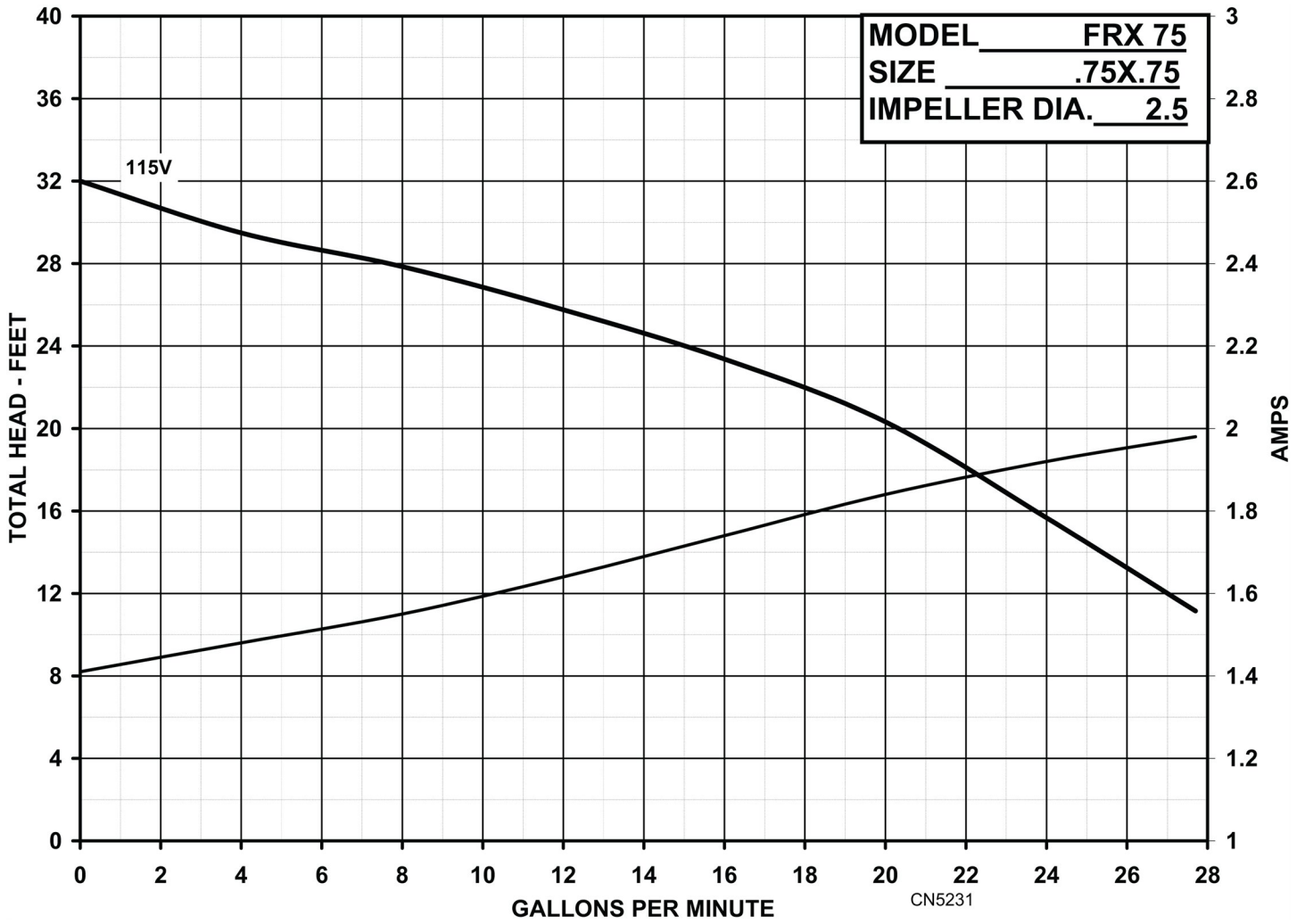
- Agricultural
- Commercial
- Industrial
- Marine
- OEM
- Transportation

FRX 75



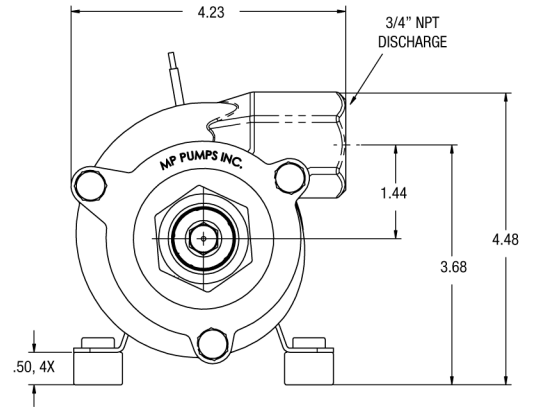
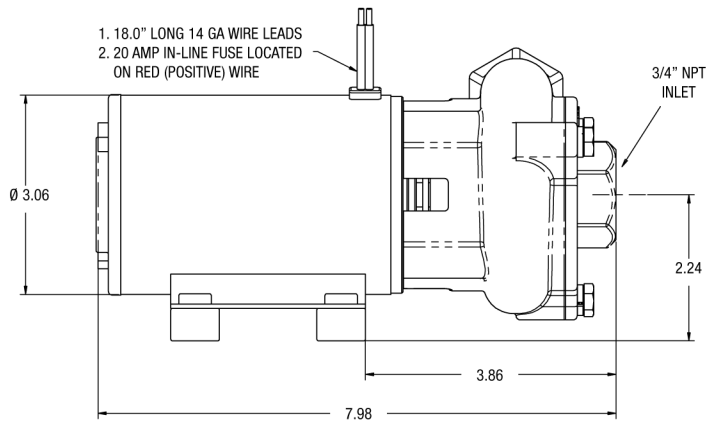
34800 BENNETT • FRASER, MI 48026-1686
 (586) 293-8240 • FAX (586) 293-8469
 (800) 563-8006 • www.mppumps.com

FRX 75

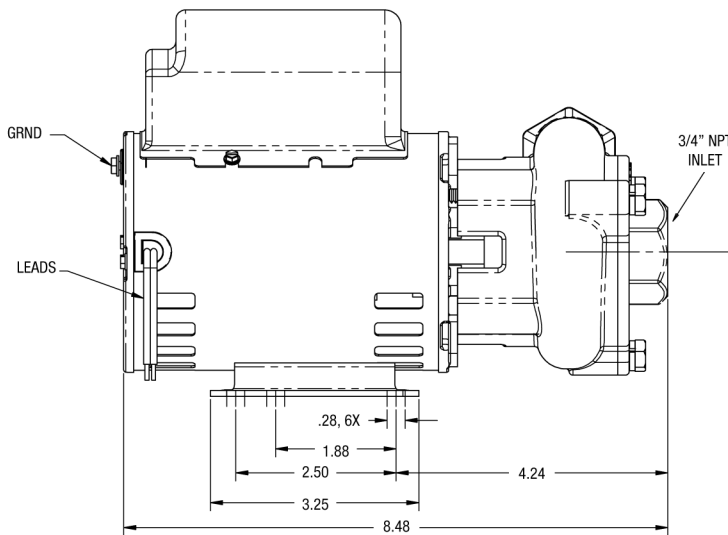
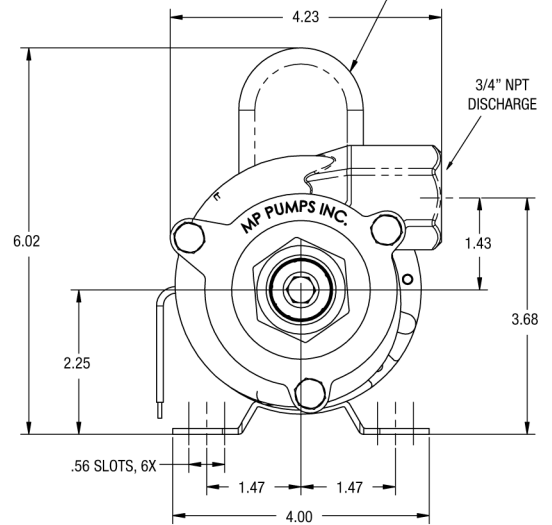


34800 BENNETT • FRASER, MI 48026-1686
(586) 293-8240 • FAX (586) 293-8469
(800) 563-8006 • www.mppumps.com

FRX 75

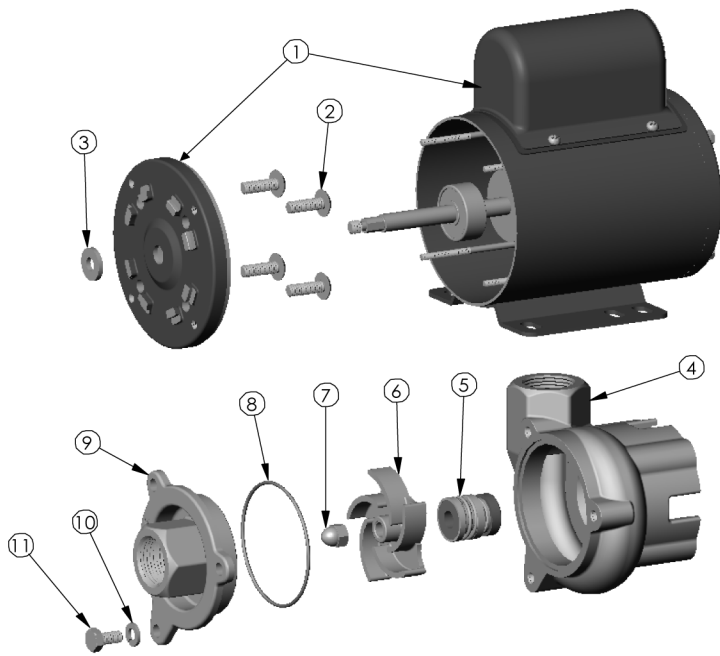


36 FRAME PSC MOTOR
 115 VAC, 60 HZ
 1/6 HP, 3500 RPM, 2.0 FLA
 CONTINUOUS DUTY
 AUTOMATIC THERMAL OVERLOAD
 OPEN DRIP PROOF
 UL/CSA RECOGNIZED



34800 BENNETT • FRASER, MI 48026-1686
 (586) 293-8240 • FAX (586) 293-8469
 (800) 563-8006 • www.mppumps.com

FRX 75



ITEM	QTY.	PART NO.	DESCRIPTION
1	1	35178	EL. MOTOR- 1115VAC, TENV
		35179	EL. MOTOR- 208-230VAC, TENV
		34411	EL. MOTOR- 115VAC, ODP
2	4	34969	1/4-20 X 3/4" TRUSS HD.SCREW
3	1	21627	RUBBER SLINGER
4	1	34032	HOUSING- 316 SS
		34038	MECH. SEAL- CAR/CER VITON
5	1	28841	MECH. SEAL- CAR/SIL. VITON
		34033	IMPELLER- 316 SS
6	1	34033	IMPELLER- 316 SS
7	1	28766	ACORN NUT
8	1	34040	ORING- VITON
9	1	34035	COVER- 316 SS
10	3	33564	LOCKWASHER- 316 SS
11	3	34037	1/4-20 X 1/2" CAPSCREW

NOTE: MORE SEAL AND MOTOR OPTIONS AVAILABLE. CONSULT FACTORY FOR DETAILS.



34800 BENNETT • FRASER, MI 48026-1686
 (586) 293-8240 • FAX (586) 293-8469
 (800) 563-8006 • www.mppumps.com