



# FLOMAX<sup>®</sup> 5 HYDRAULIC

## 1-1/2" x 1-1/2" Self Priming Centrifugal Pump

FLOMAX<sup>®</sup> 5 hydraulic self-priming centrifugal pumps are capable of creating vacuum sufficient to lift liquids from heights up to 25 feet above the source. Once primed, the pump's built in flapper valve will maintain a full column of liquid in the suction line.

A FLOMAX<sup>®</sup> 5 hydraulic pump is available in .22, .37 or .45 cubic inch displacement gerotor motors. They are capable of hydraulic flows ranging from 4 GPM to 11 GPM and hydraulic pressures ranging from 700 PSI to 1950 PSI.

Standard features include stainless steel drive sleeve, stainless steel fasteners, renewable wear plate, and a semi-open dynamically balanced impeller. Options include double grease lubricated seals, stainless steel impeller and seals for all types of abrasive and/or corrosive services.

The FLOMAX<sup>®</sup> series of pumps are commonly used in Industrial, Agricultural and Marine applications, such as: Bilge Pumps, Auxiliary Fire Pumps, Ballast Transfer Pumps, Washdown Pumps, Fertilizer and Pesticide Pumps, Applicators & Sprayers, Blending Pumps, Nurse Tanks, Bulk Transfer Pumps and much more.



**Application:**

- Agricultural
- Industrial
- Marine

**Features:**

- Renewable wear plate
- Stainless steel drive sleeve
- Stainless steel fasteners
- Up to a 25' suction lift

**Hydraulic Fluid Flow:**

- Up to 11 GPM

**Hydraulic Motor:**

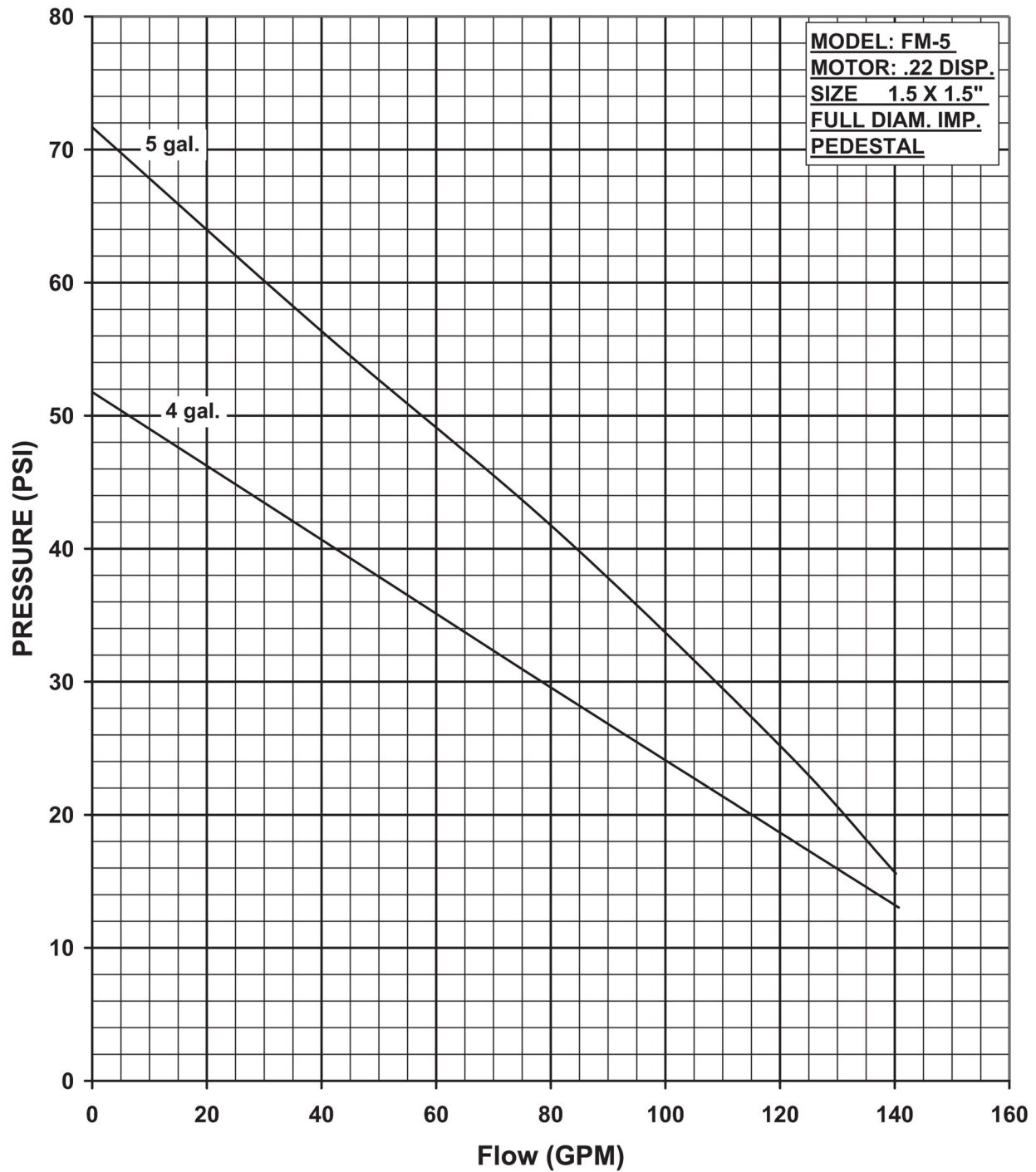
- Gerotor

**Hydraulic System Pressure:**

- Up to 2550 psi

### SPECIFICATIONS:

PSI	Up to 100
Suction and Discharge	1.5" x 1.5" NPT ports
Materials of Construction	Aluminum Bronze Cast iron
Flow	Up to 175 GPM
Head Feet	Up to 230'
Impeller	5.0" semi-open
Max Solid Size	.56" diameter
Drive Options	Hydraulic motor .22 cu. in. Hydraulic motor .37 cu. in. Hydraulic motor .45 cu. in.
Seal	Special seal material combinations available (consult factory) Standard carbon / ceramic / Viton

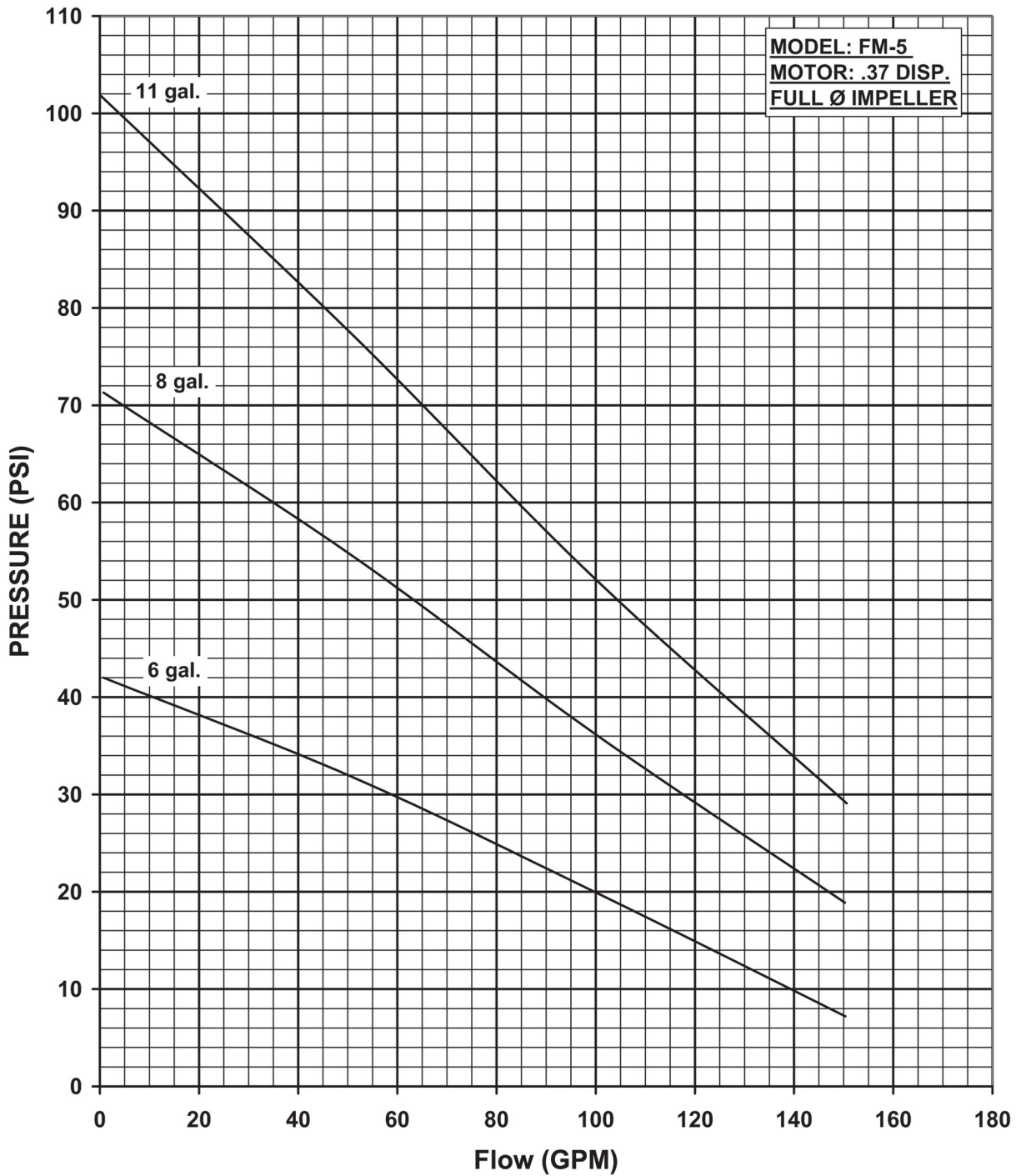


OIL FLOW	SHUT OFF	20	40	60	80	100	120	140	MAX. HYD. OIL PRESS REQ.
	0 GPM	GPM	GPM	GPM	GPM	GPM	GPM	GPM	
5 GPM	72 PSI	64 PSI	56 PSI	49 PSI	42 PSI	34 PSI	25 PSI	13 PSI	2550 PSI
4 GPM	52 PSI	46 PSI	41 PSI	35 PSI	29 PSI	24 PSI	18 PSI	13 PSI	2150 PSI

CN 7126-S



34800 BENNETT • FRASER, MI 48026-1686  
 (586) 293-8240 • FAX (586) 293-8469  
 (800) 563-8006 • www.mppumps.com

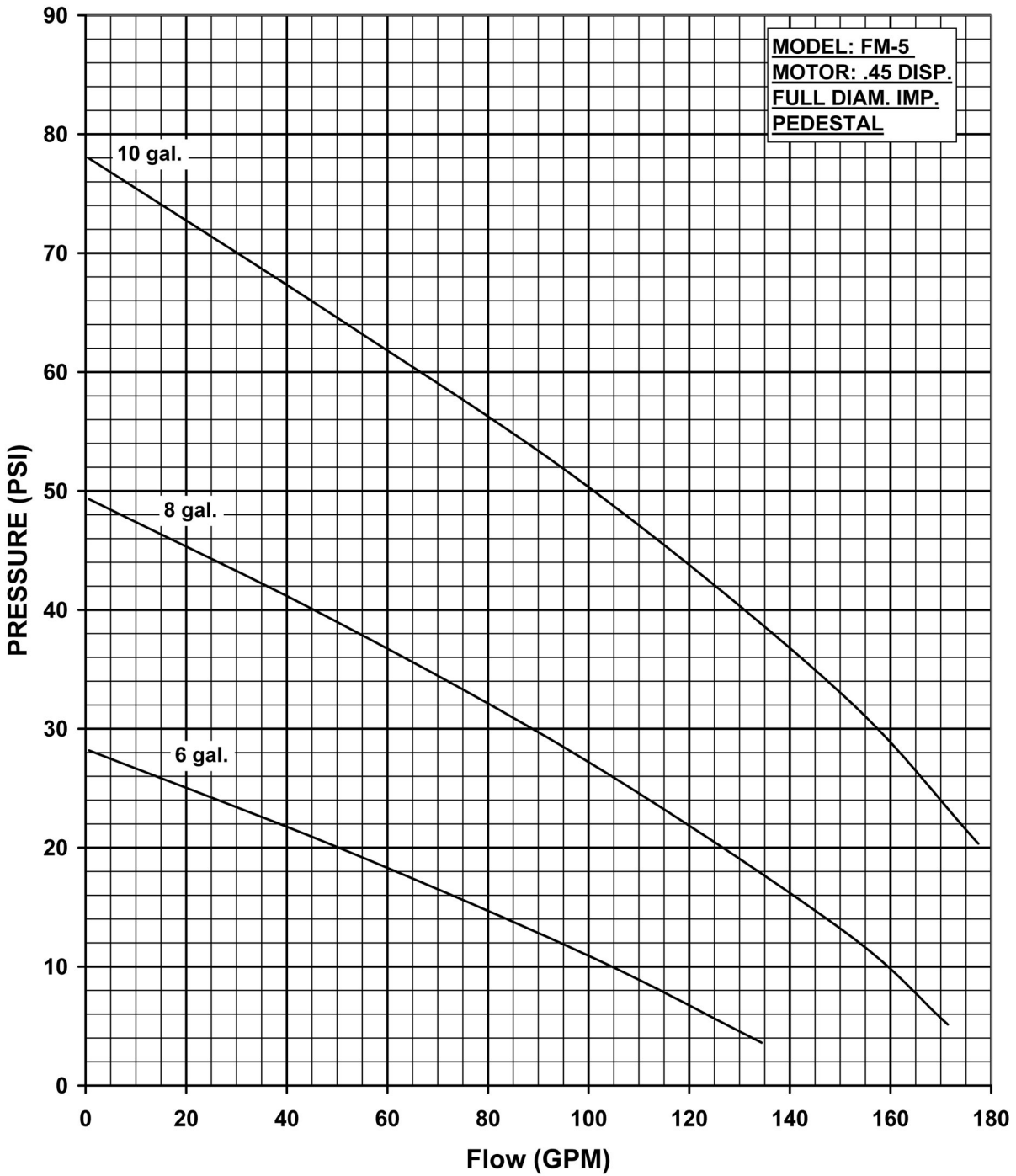


OIL FLOW	SHUT OFF 0 GPM	10 GPM	25 GPM	40 GPM	55 GPM	70 GPM	85 GPM	100 GPM	115 GPM	130 GPM	145 GPM	MAX. HYD. OIL PRESS.REQ.
6 GPM	42 PSI	40 PSI	37 PSI	34 PSI	31 PSI	27 PSI	24 PSI	20 PSI	16 PSI	13 PSI	9 PSI	1180 PSI
8 GPM	72 PSI	68 PSI	63 PSI	58 PSI	53 PSI	47 PSI	42 PSI	36 PSI	31 PSI	26 PSI	21 PSI	1610 PSI
11 GPM	72 PSI	97 PSI	90 PSI	83 PSI	75 PSI	67 PSI	60 PSI	53 PSI	43 PSI	39 PSI	32 PSI	1950 PSI

CN 7088-S



34800 BENNETT • FRASER, MI 48026-1686  
 (586) 293-8240 • FAX (586) 293-8469  
 (800) 563-8006 • www.mppumps.com

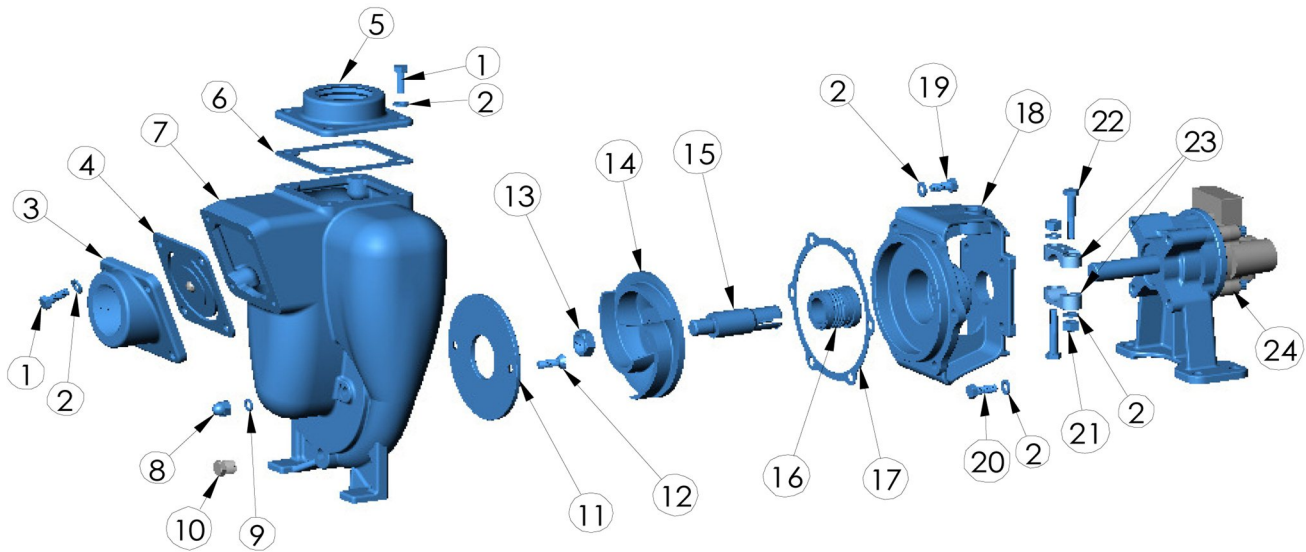


OIL FLOW	SHUT OFF 0 GPM	10 GPM	25 GPM	40 GPM	55 GPM	70 GPM	85 GPM	100 GPM	115 GPM	130 GPM	145 GPM	MAX. HYD. OIL PRESS.REQ.
6 GPM	28	27	24	22	19	16	14	11	8	4		720
8 GPM	49	47	44	42	37	34	31	27	23	19	15	1200
10 GPM	77	75	71	67	64	59	55	50	46	41	36	1650

CN 7089-S



34800 BENNETT • FRASER, MI 48026-1686  
 (586) 293-8240 • FAX (586) 293-8469  
 (800) 563-8006 • www.mppumps.com



ITEM NO.	PART NO.	DESCRIPTION	QTY.		ITEM NO.	PART NO.	DESCRIPTION	QTY.
1	21242	CAPSCREW - 5/16"-18 X 7/8"	8	*	15	22286	DRIVE SLEEVE SS - 3/4"	1
2	21238	LOCKWASHER 5/16	20	*	16	22273	SEAL- VITON	1
3	22263	SUCTION FLANGE- 1 1/2" NPT	1	*	17	22255	GASKET	1
4	23022	FLAPPER ASY- BUNA	1		18	22247	ADAPTOR	1
5	22266	DISCHARGE FLANGE- 1 1/2" NPT	1		19	24965	CAPSCREW- 5/16"-18 X 3/4"	6
* 6	22256	GASKET- BUNA	1		20	21278	CAPSCREW- 5/16"-24 X .88	4
7	22251	HOUSING- CAST IRON	1		21	21284	HEX NUT- 5/16"-18	2
8	21237	ACORN NUT- 5/16"-18	2		22	21264	CAPSCREW- 5/16"-18 X 1 3/4"	2
* 9	21248	GASKET - 1/2 X 5/16 X 1/16	2		23	21946	CLAMP- 3/4 SL	1
* 10	41475	PIPE PLUG- 1/4" NPT	1		24	35995	.25 DISP. HYD. PEDESTAL ASY	1
* 11	22260	WEAR PLATE	1			34812	.37 DISP. HYD. PEDESTAL ASY	
12	21249	SCREW SS 5/16"-18X1	2			35996	.45 DISP. HYD. PEDESTAL ASY	
13	22655	JAM NUT- 5/8"-18	1			34813	.58 DISP. HYD. PEDESTAL ASY	
* 14	22293	IMPELLER	1					

\* SUGGESTED REPLACEMENT PARTS



34800 BENNETT • FRASER, MI 48026-1686  
 (586) 293-8240 • FAX (586) 293-8469  
 (800) 563-8006 • www.mppumps.com